

FITTING INSTRUCTIONS

FOR ADJUSTABLE DOOR HINGE IPA NO. 60898

REHAU NORDIC DESIGN PLUS:

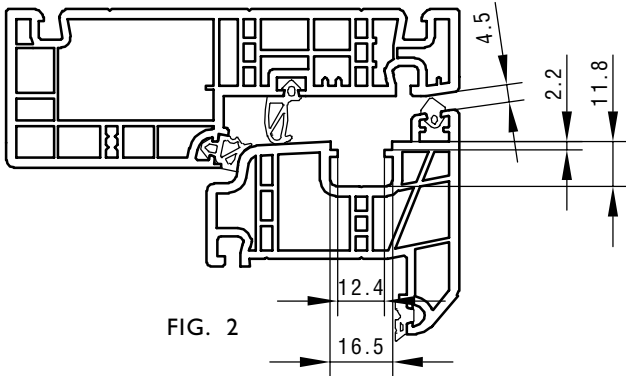


FIG. 2

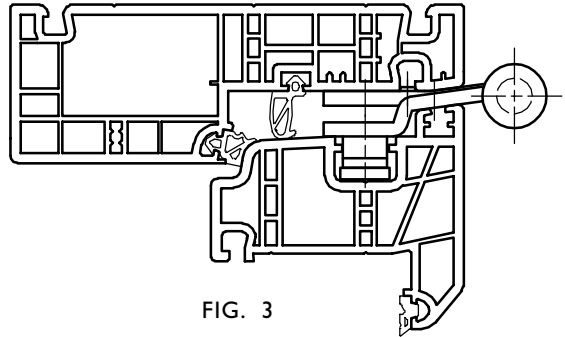


FIG. 3

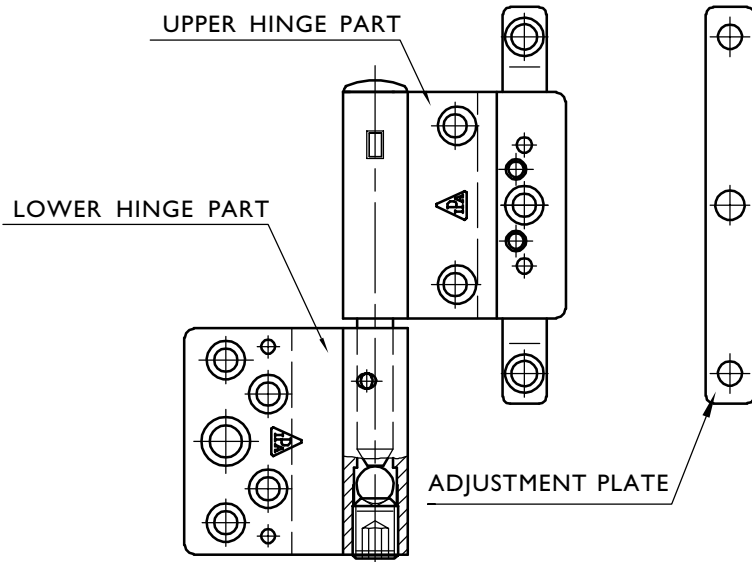
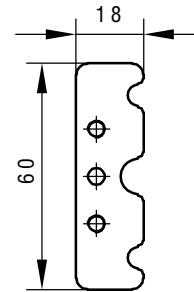


FIG. 1



THREADED PLATE
IPA NO. 60821

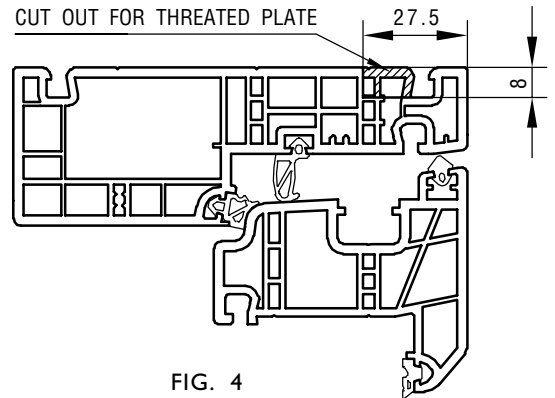


FIG. 4

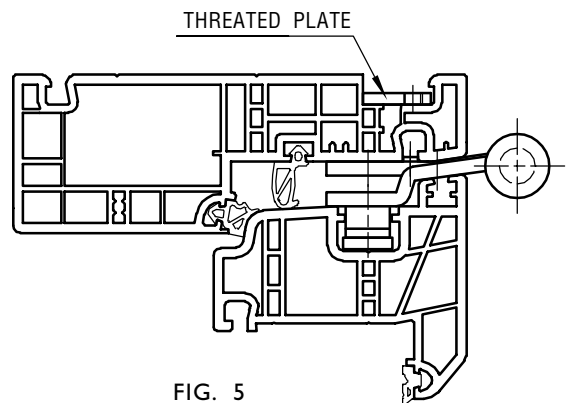


FIG. 5

FITTING:

1. MOUNT THE ADJUSTMENT PLATE IN THE GOOVE OF THE DOOR IN THE MIDDLE OF WHERE THE LOWER HINGE PART IS BEING MOUNTED.
2. PLACE HINGE SO THAT THE LOWER HINGE PART IS OVER THE ADJUSTMENT PLATE AND FASTEN IT. THE ADJUSTMENT SCREWS SHOULD BE LOOSENED.

ON LARGE DOORS IT IS RECOMMENDED TO USE THE THREADED PLATES IPA NO. 60821. THESE ARE CUT INTO THE PROFILE ON THE BACK OF THE FRAME. USE M5 SCREWS FOR THE TWO THREADED HOLES, SEE FIG. 4 AND 5.

ADJUSTMENT:

- VERTICALLY:** ADJUST TO WANTED POSITION ON THE LARGE SCREW AT THE BOTTOM OF THE HINGE ± 3 MM.
- HORIZONTALLY:** LOOSEN THE MOUNTING SCREWS AND ADJUST TO WANTED POSITION. FASTEN THE MOUNTING SCREWS.

MAINTENANCE:

TEST THE OPERATION FROM TIME TO TIME. WHEN FITTING - LUBRICATE THE PIVOT/MOVABLE METAL PARTS OF THE MECHANISM WHILE ACTIVATING REPEATEDLY. HEREAFTER LUBRICATE MINIMUM TWICE A YEAR.