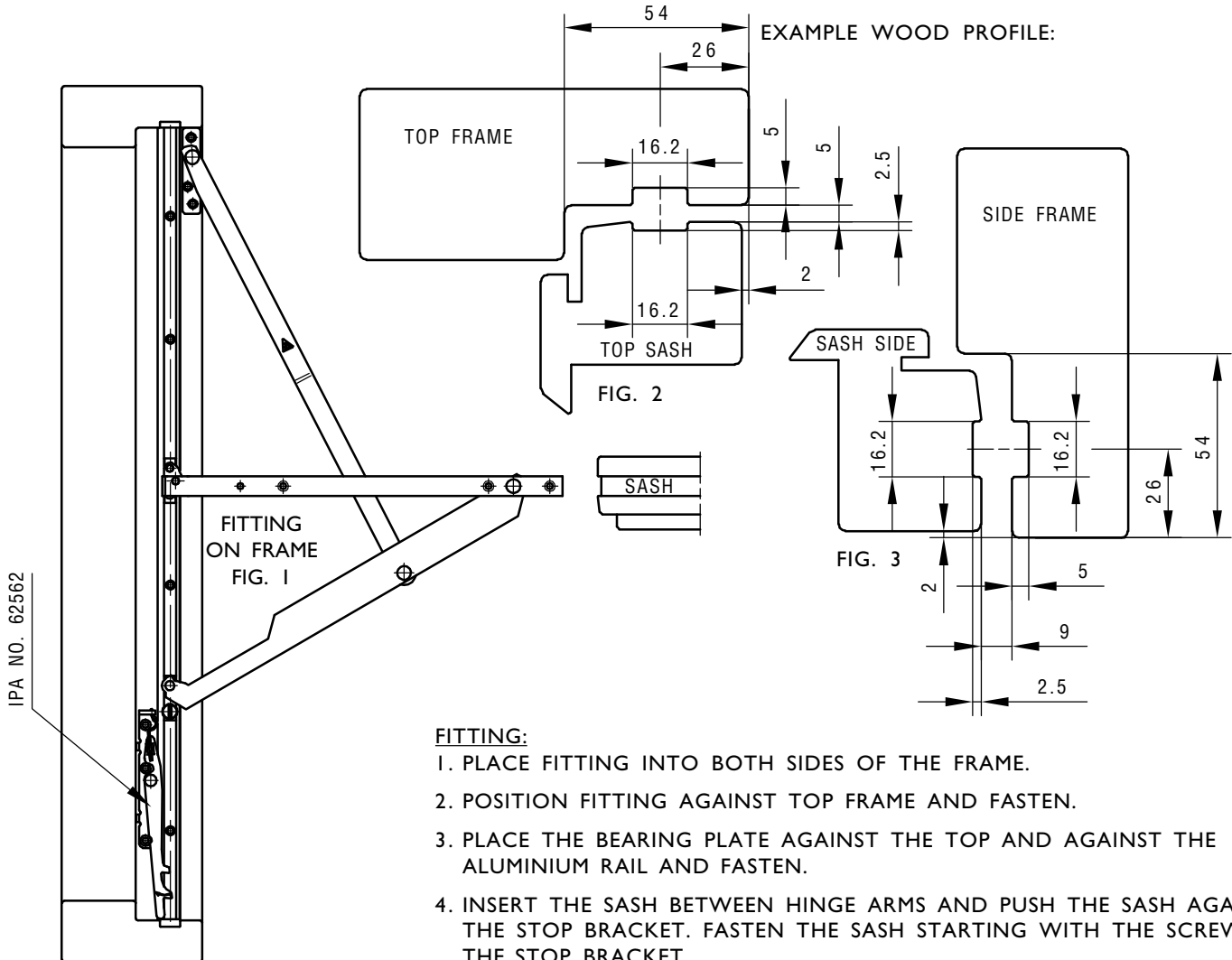


## FITTING INSTRUCTIONS

FOR REVERSIBLE PROJECTING GEAR IPA NO.s 62503-12  
 AND SAFETY CATCH IPA NO. 62562



### FITTING:

1. PLACE FITTING INTO BOTH SIDES OF THE FRAME.
2. POSITION FITTING AGAINST TOP FRAME AND FASTEN.
3. PLACE THE BEARING PLATE AGAINST THE TOP AND AGAINST THE ALUMINIUM RAIL AND FASTEN.
4. INSERT THE SASH BETWEEN HINGE ARMS AND PUSH THE SASH AGAINST THE STOP BRACKET. FASTEN THE SASH STARTING WITH THE SCREW IN THE STOP BRACKET.
5. THE SASH CAN BE OPENED TO ANY ANGLE. WITH LARGE OPENING ANGLE A LIGHT FRICTION CAN BE OBTAINED BY MEANS OF THE FRICTION SCREWS IN THE SIDES. THE FRICTION HAS TO BE THE SAME ON BOTH SIDES. PLEASE NOTE THAT THE SASH IS NOT SECURED FOR HEAVY WINDS AND OTHER HEAVY INFLUENCE.
6. FIT THE RESTRICTOR IPA NO. 62562 ON THE LEFT SIDE, SEE FIG. 1.

USE SCREW NO. 4.0.

### OPERATION INSTRUCTIONS:

1. OPEN THE WINDOW - THE RESTRICTOR WILL AUTOMATICALLY RESTRICT THE WINDOW.
2. PULL THE SASH 20 MM - PRESS THE RESTRICTOR IN THE DIRECTION OF THE ARROW AND OPEN THE WINDOW.
3. WHEN THE WINDOW IS REVERSED FOR CLEANING, THE RESTRICTOR WILL ENGAGE AUTOMATICALLY. DISENGAGE AS MENTIONED IN POINT 2.

### MAINTENANCE:

THE FITTINGS ARE NOT TO BE PAINTED. WHEN FITTING - LUBRICATE THE PIVOT/MOVABLE METAL PARTS OF THE MECHANISM WHILE ACTIVATING REPEATEDLY. HEREAFTER LUBRICATE MINIMUM TWICE A YEAR. DO NOT LUBRICATE THE ALUMINIUM RAILS. TEST THE OPERATION FROM TIME TO TIME.

IPA NO.	LENGHT OF FITTINGS MM	MAX. WEIGHT KGS
62503	444	45
62504	544	45
62505	644	45
62506	744	45
62507	844	45
62508	944	45
62509	1044	45
62510	1144	45
62511	1244	45
62512	1344	45
USE THE LARGEST POSSIBLE FITTING		