

## FITTING INSTRUCTION

### ADJUSTABLE CANOPY STAYS WITH FRICTION IPA NO.s 21186-87 & 89

EXAMPLE WOOD PROFILE

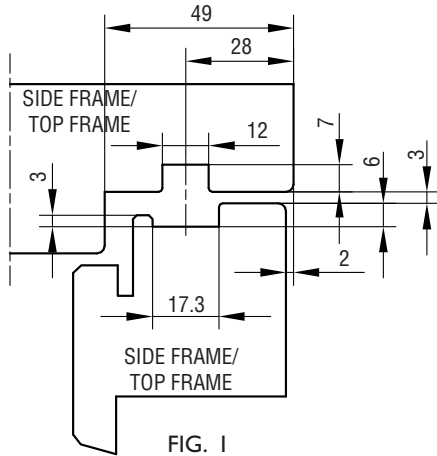


FIG. 1

HORIZONTAL PLAN

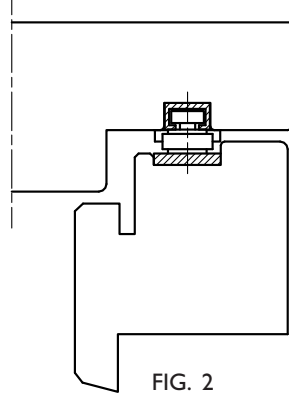


FIG. 2

**OBS! RE. IPA NO. 21187:**

FOR BIG WINDOWS (>1200 MM) WITH 3-LAYER GLASS AND NO REQUIREMENTS FOR EGRESS OPENINGS THE USE OF IPA NO. 21189 IS RECOMMENDED, AS THE VENTILATION POSITION OTHERWISE MAY BE DIFFICULT TO ACHIEVE BECAUSE OF THE OPENING GEOMETRY OF THE GEARS.

**MAINTENANCE:**

THE FITTINGS ARE NOT TO BE PAINTED. TEST THE OPERATION FROM TIME TO TIME. WHEN FITTING - LUBRICATE THE PIVOT/MOVABLE METAL PARTS OF THE MECHANISM WHILE ACTIVATING REPEATEDLY. HEREAFTER LUBRICATE MINIMUM TWICE A YEAR. DO NOT LUBRICATE THE ALUMINIUM RAILS. SEE ALSO SPECIAL CHAPTER ON THIS SUBJECT.

IPA NO.	21186	21187	21189
MAX. SASH WEIGHT KG	40	50	70
MAX. INSIDE FRAME HEIGHT MM	844	1344	1544
USE SCREW NO.	4.0	4.0	4.0

**FITTING:**

- SIDE SASH & -FRAME AND TOP SASH & -FRAME ARE MADE WITH THROUGH-GOING GROOVES, SEE FIGURE 1.
- CLOSE THE FITTING AND PLACE IT IN THE GROOVE OF THE SIDE FRAME. PLACE THE FITTING UP AGAINST THE BOTTOM OF THE GROOVE IN THE TOP FRAME. FASTEN THE SCREW BELOW, OPEN THE FITTING AND FASTEN THE REMAINING SCREWS.  
21187: FASTEN THE STOPPLATE PLACED IN THE ALUMINIUM RAIL BY USING A SCREW IN THE TOP SCREW HOLE FOR MAXIMUM FIRE-ESCAPE OPENING. IF THE BOTTOM SCREW HOLE IS USED THEN THE FITTING WILL CARRY A MAX. SASH WEIGHT OF 60 KGS., BUT THE FIRE-ESCAPE OPENING WILL BE REDUCED.  
21189: FASTEN THE STOPPLATE PLACED IN THE ALUMINIUM RAIL BY USING A SCREW IN THE TOP SCREW HOLE FOR MAXIMUM FIRE-ESCAPE OPENING. IF ONE OF THE OTHER SCREW HOLE ARE USED THEN THE FIRE-ESCAPE OPENING WILL BE REDUCED, BUT THE MAX. SASH WEIGHT WILL THEN BE:  
CENTER HOLE: 85 KGS - BOTTOM HOLE: 100 KGS.
- PUSH THE SASH INTO ITS PLACE BY INSERTING IT BETWEEN THE FITTINGS, GUIDED BY THE GROOVES IN THE SASH, TILL THE SASH HITS THE STOPS OF THE FITTING. THESE STOPS WILL GUARANTEE A 3 MM GAB BETWEEN FRAME AND SASH. FASTEN THE SCREWS, STARTING WITH THE ONES IN THE TOP BRACKETS.
- NOW THE FRICTION MAY BE ADJUSTED BY MEANS OF THE SCREWS IN THE SLIDES. BEFORE ADJUSTMENT, PRESS THE SLIDING PART DOWN TO THE STOPS. THE BEST RESULT FOR THE WINDOW MOVEMENT IS ACHIEVED BY EQUAL FRICTION AT BOTH SIDES AND TO ENSURE THIS THE SCREWS MUST NEVER BE FASTENED MORE THAN JUST ENOUGH TO HOLD THE WINDOW IN OPEN POSITION. PLEASE NOTE THAT WITH A SMALL WINDOW OPENING, THE FRICTION IS NOT INFLUENCED BY TIGHTENING THE SCREWS HARDER. TO ENSURE THE WINDOW IN STAYING OPENED WITH A SMALL WINDOW OPENING, WE RECOMMEND MOUNTING A SAFETY CATCH.
- THE SASH CAN BE ADJUSTED  $\pm 1.5$  MM UP OR DOWN. ADJUST BY USING A TORX20 KEY TO TURN THE ECCENTRIC SCREW. BY DELIVERY THE MARK ON THE ECCENTRIC SCREW IS IN A VERTICAL POSITION INDICATING THE 0-POSITION. WHEN THE MARK IS IN HORIZONTAL POSITION IN EITHER TOP OR BOTTOM, THE FITTING IS ADJUSTED TO IT'S MAX OF  $\pm 1.5$  MM.

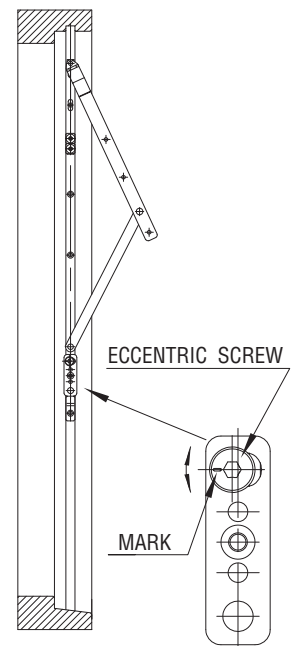


FIG. 3