

## FITTING INSTRUCTIONS

### ADJUSTABLE CANOPY STAYS WITH ADJUSTABLE FRICTION IPA NO. 21167 + 21178 & 88

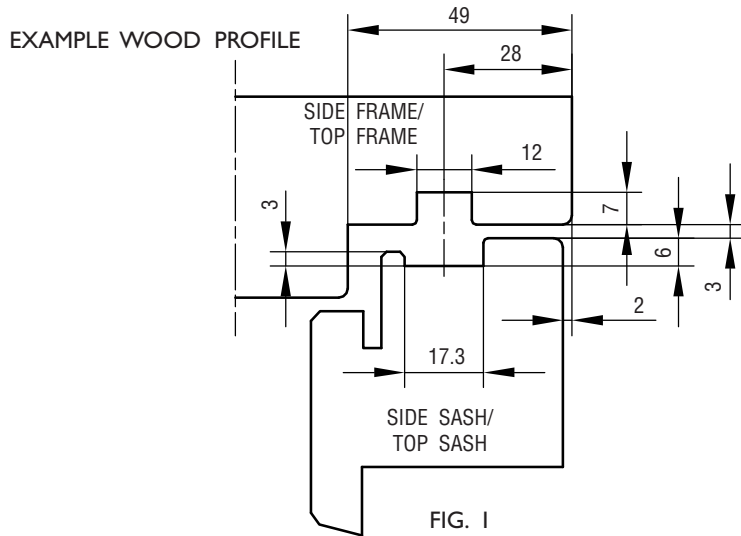


FIG. 1

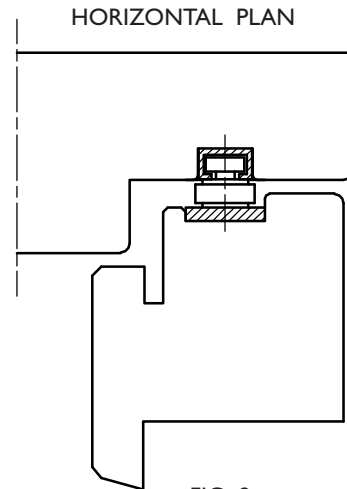


FIG. 2

#### FITTING:

1. CLOSE THE FITTING AND PLACE IT IN THE GROOVE OF THE SIDE FRAME.

21167: PLACE THE FITTING UP AGAINST THE TOP FRAME (IF GROOVE HAS BEEN MADE IN THE TOP FRAME - AS SHOWN IN FIG. 1 - DO NOT PLACE THE FITTING AGAINST THE BOTTOM OF THE GROOVE ONLY TO THE EDGE OF THE GROOVE).

21178 & 88: PLACE THE FITTING UP AGAINST THE BOTTOM OF THE GROOVE IN THE TOP FRAME.

PLACE AND FASTEN THE SCREWS IN THE BOTTOM HOLES OF THE FITTING. OPEN THE FITTING AND FASTEN THE TOP SCREW IN THE ALUMINIUM RAIL. THE STOP IN THE ALUMINIUM RAIL SHOULD NOT BE FASTENED UNTIL THE SASH HAS BEEN MOUNTED. THE STOP IS FASTENED THROUGH THE COUNTERSUNK SCREW HOLE. SEE FIG. 3.

DEPENDING ON THE QUALITY OF THE FRAME MATERIAL AND THE FASTENING POSSIBILITIES OF THE FITTING ON HEAVY WINDOWS (3-LAYER GLASS) A MINOR DROP OF THE SASH MAY OCCUR. IN SUCH CASES WE RECOMMEND USING IPA NO. 21178 & 21188 WHICH HAS EXTRA FASTENING POINTS.

| IPA NO.                     | 21167 | 21178 | 21188 |
|-----------------------------|-------|-------|-------|
| MAX. SASH WEIGHT KG         | 70    | 70    | 70    |
| MAX. INSIDE FRAME HEIGHT MM | 1344  | 1344  | 1344  |
| USE SCREW NO.               | 4.0   | 4.0   | 4.0   |

2. PUSH THE SASH INTO ITS PLACE BY INSERTING IT BETWEEN THE FITTINGS GUIDED BY THE GROOVES IN THE SASH, PUSH UNTIL THE SASH HITS THE UPPER BRACKET OF THE FITTING. FASTEN THE SCREWS, START WITH THE SCREW IN THE TOP BRACKET. YOU CAN FREELY CHOOSE BETWEEN THE SCREW HOLES IN THE UPPER BRACKET, ALTERNATIVELY USE BOTH HOLES.

21167: WHEN THE TOP SASH IS MADE WITH GROOVE ACCORDING TO FIG. 1 USE THE 2 DISTANCE PIECES IN BOTH ENDS OF THE UPPER SASH GROOVE.

3. NOW THE FRICTION MAY BE ADJUSTED BY MEANS OF THE SCREWS IN THE ALUMINIUM RAILS. BEFORE ADJUSTMENT, PRESS THE SLIDING PART DOWN TO THE STOPS. THE BEST RESULT FOR THE WINDOW MOVEMENT IS ACHIEVED BY EQUAL FRICTION AT BOTH SIDES AND TO SECURE THIS THE SCREWS MUST NEVER BE FASTENED MORE THAN JUST ENOUGH TO HOLD THE WINDOW IN OPEN POSITION. PLEASE NOTE THAT WITH A SMALL WINDOW OPENING, THE FRICTION IS NOT INFLUENCED BY TIGHTENING THE SCREWS HARDER. TO ENSURE THE WINDOW IN STAYING OPENED WITH A SMALL WINDOW OPENING, WE RECOMMEND MOUNTING A SAFETY CATCH.

4. 21188: THE SASH CAN BE ADJUSTED  $\pm 1.5$  MM UP OR DOWN. ADJUST BY USING A TORX-20 KEY TO TURN THE ECCENTRIC SCREW. BY DELIVERY THE MARK ON THE ECCENTRIC SCREW IS IN A VERTICAL POSITION INDICATING THE 0-POSITION. WHEN THE MARK IS IN HORIZONTAL POSITION IN EITHER TOP OR BOTTOM, THE FITTING IS ADJUSTED TO IT'S MAX OF  $\pm 1.5$  MM.

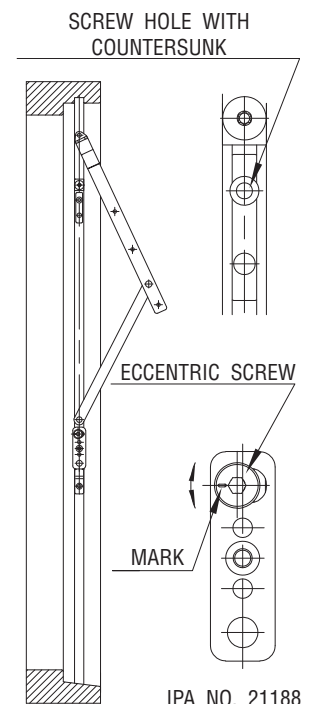


FIG. 3

#### MAINTENANCE:

DO NOT PAINT THE ALUMINIUM RAILS. WHEN FITTING - LUBRICATE THE MOVABLE METAL PARTS OF THE MECHANISM WHILE ACTIVATING REPEATEDLY. HEREAFTER LUBRICATE MINIMUM TWICE A YEAR.