

## FITTING INSTRUCTIONS

### ESPAÑOLETES WITH SIDE BOLTS IPA NR. 23131 - 34

IPA NO.	L MM	A MM	B MM	C MM	D MM	E MM	F MM	G MM
23131	720	250	470	90	250	15	28	37
23132	920	250	670	90	450	15	28	37
23133	1120	250	870	90	650	15	28	37
23134	1320	250	1070	90	850	15	28	37

FIG. 1

FACEPLATE: 16/17 MM

**SHORTENING POSSIBILITIES:**

WITHOUT FRICTION STAY:

130 MM AT THE TOP WITH SIDE BOLTS OUT.

70 MM AT THE BOTTOM WITH SIDE BOLTS IN.

FRICTION STAY AT THE TOP:

(TO MOUNT FRICTION STAY MIN. 60 MM HAS TO BE CUT OF.)

60 - 110 MM AT THE TOP WITH SIDE BOLTS OUT.

70 MM AT THE BOTTOM WITH SIDE BOLTS IN.

FRICTION STAY AT THE BOTTOM:

130 MM AT THE TOP WITH SIDE BOLTS OUT.

50 MM AT THE BOTTOM WITH SIDE BOLTS IN.

USE SCREW NO. 4.0

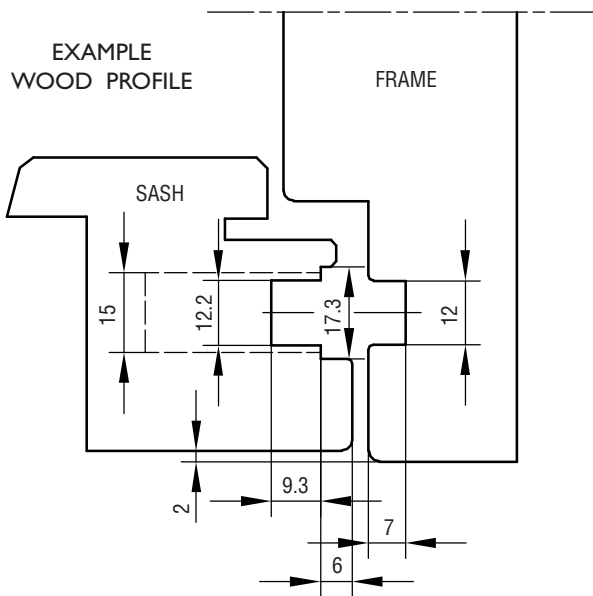


FIG. 2

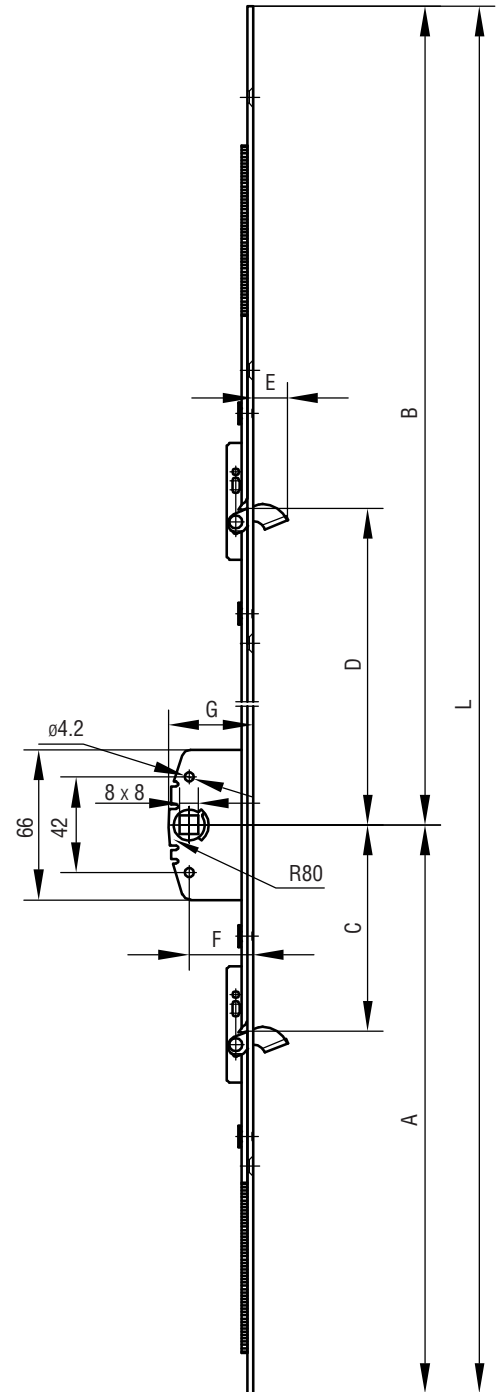


FIG. 3

**MAINTENANCE:**

THE FITTINGS ARE NOT TO BE PAINTED. TEST THE OPERATION FROM TIME TO TIME. WHEN MOUNTING - LUBRICATE THE PIVOT/MOVABLE METAL PARTS OF THE MECHANISM WHILE ACTIVATING REPEATEDLY. HEREAFTER LUBRICATE MINIMUM TWICE A YEAR.