

IMPORTANT: WHEN MANUFACTURING AND MOUNTING THE FITTING THE SLIDING SHOES NEED TO BE IN CENTER POSITION IN THE ALUMINIUM PROFILE. WHEN MOUNTING THE WINDOW THE TOP AND BOTTOM FRAME SHOULD BE PARALLEL. THIS IS NECESSARY IN ORDER TO LET THE SLIDING SHOES GLIDE WITHOUT FRICTION IN THE ALUMINIUM PROFILE.

FITTING INSTRUCTIONS

SIDE SWING 90° W/FRICTION IPA ARTICLE NUMBER 21201

EXAMPLE WOOD PROFILE



FIG. 2
HORIZONTAL PLAN

ARM FOR SASH

FITTING SHOWN ON BOTTOM

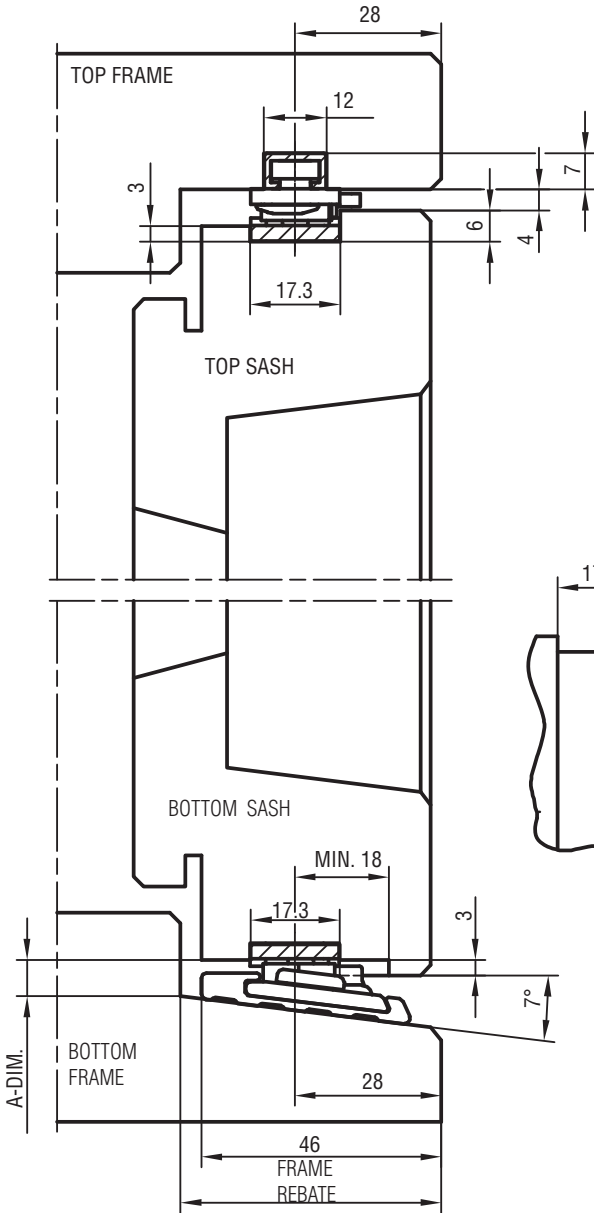
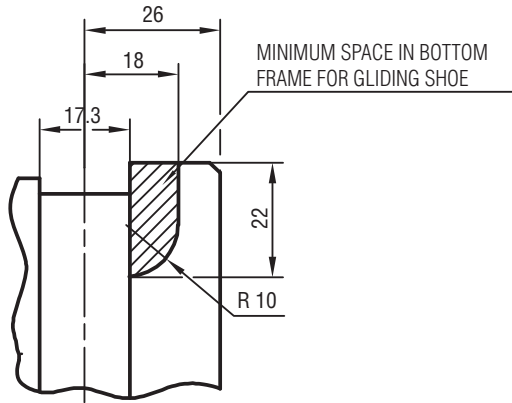
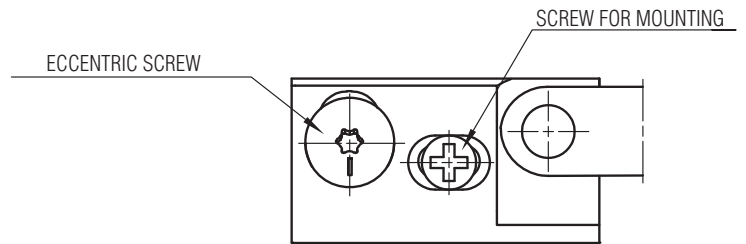


FIG. 1
VERTICAL PLAN

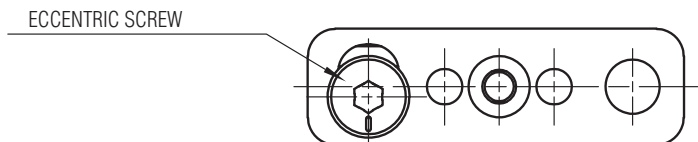


FRAME REBATE	A-DIM.
46	7.5
50	7
54	6.5

FIG. 3



ADJUSTMENT OF BOTTOM FITTING



ADJUSTMENT OF TOP FITTING

FRAME SIDE AND SASH SIDE NEED TO HAVE THE SAME PROFILE TOP FRAME AND TOP SASH

MOUNTING:

1. PLACE THE FITTING IN THE TOP AND BOTTOM FRAME UP AGAINST THE SIDE FRAME. FASTEN THE SCREWS (FIG. 1 AND 2)
2. INSERT SASH INTO POSITION OF THE STEERING SASH ARMS.
3. FRECTION IS ADJUSTED ON THE TOP FITTING. TO ADJUST THE OPENING ANGLE OF THE VINDOW MOVE THE ADJUSTABLE STOP IN THE TOP FITTING.
4. THE SASK CAN BE ADJUSTED $\pm 1,5$ MM UP OR DOWN USING A KEY TO TURN THE ECCENTRIC SCREW IN THE BOTTOM FITTING (FIG. 4).

FIG. 5:

FOR VINDOW SASH LARGER THAN 838 X 1138 (BXH), THE FOLLOWING RE-QUIREMENTS MUST BE FULFILLED:

- THE GLAS MUST BE FULL GLUED IN THE SASH
- SUPPORT FITTING MUST BE MOUNTED IN THE BOTTOM SASH, JUST AFTER THE ALUMINIUM RAIL.
- THE VINDOW SHOULD BE MOUNTED WITH A SAFETY RESTRICTOR THAT AUTOMATICALLY HOLD THE WINDOW.

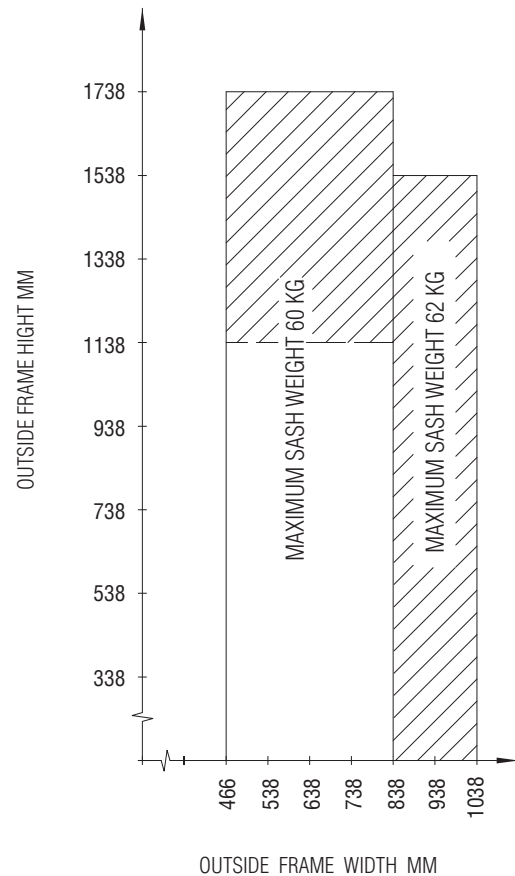


FIG. 5

MAINTENANCE:

THE FITTING ARE NOT TO BE PAINTED. TEST THE OPERATION FROM TIME TO TIME. WHEN FITTING – LUBRICATE THE PIVOT/MOVABLE METAL PARTS OF THE MECHANISM WHILE ACTIVATING REPEATDLY. HEREAFTER LUBRICATE MINIMUM TWICE A YEAR. DO NOT LUBRICATE THE ALUMINIUM RAILS.