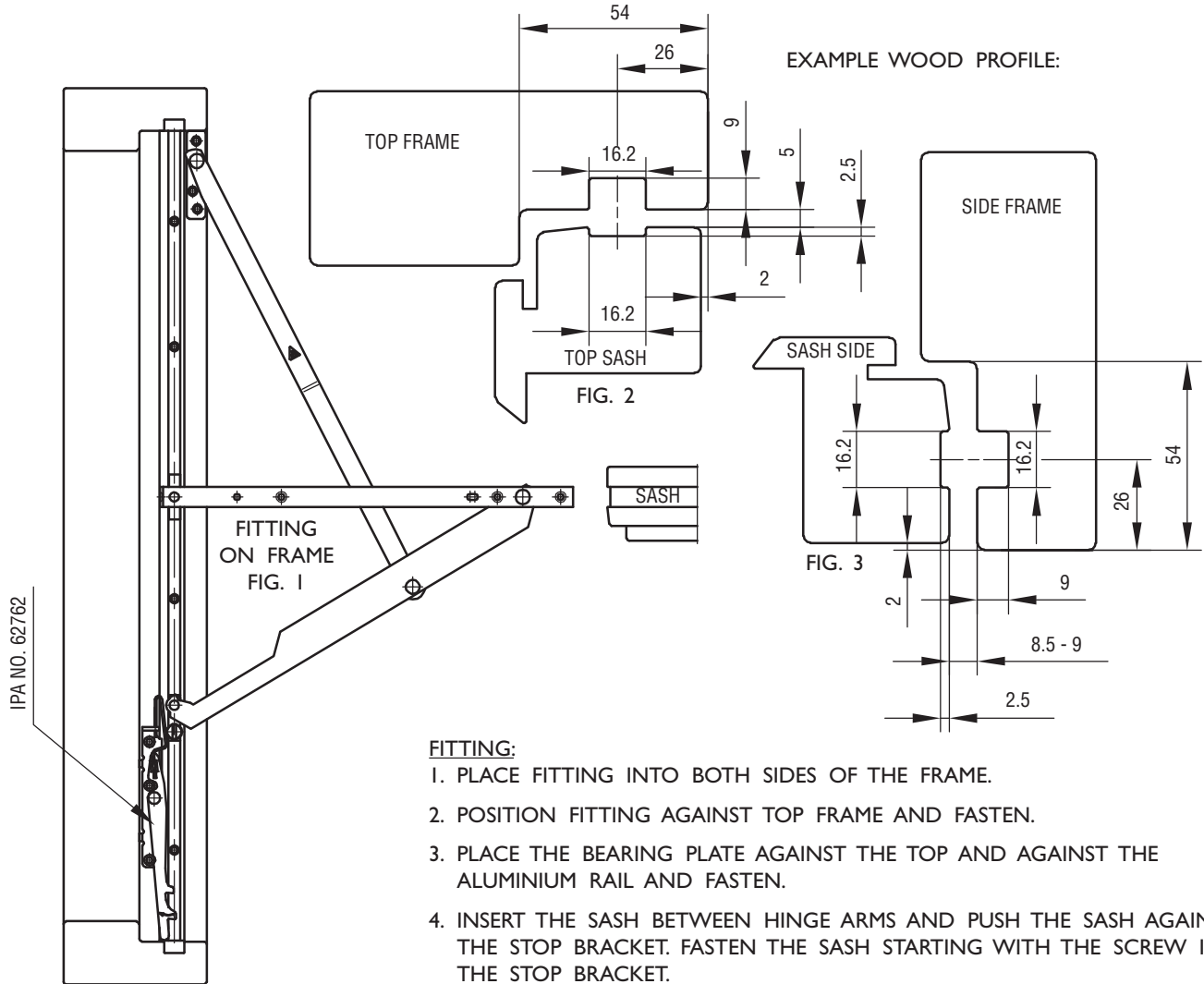


## FITTING INSTRUCTIONS

### TOP SWING FITTING IPA NO.s 62944-52 AND SAFETY CATCH IPA NO. 62762

IMPORTANT: THE SIDE FRAMES MUST BE STRAIGHT TO THE EFFECT THAT THE DISTANCE BETWEEN THE SIDE FRAMES (SLIDING RAILS) IS EXACTLY THE SAME FOR ANY HEIGHT OF THE FRAME. THIS IS IMPERATIVE FOR THE SLIDES TO TRAVEL FREELY IN THEIR ALUMINIUM RAILS.



**FITTING:**

1. PLACE FITTING INTO BOTH SIDES OF THE FRAME.
2. POSITION FITTING AGAINST TOP FRAME AND FASTEN.
3. PLACE THE BEARING PLATE AGAINST THE TOP AND AGAINST THE ALUMINIUM RAIL AND FASTEN.
4. INSERT THE SASH BETWEEN HINGE ARMS AND PUSH THE SASH AGAINST THE STOP BRACKET. FASTEN THE SASH STARTING WITH THE SCREW IN THE STOP BRACKET.
5. THE SASH CAN BE OPENED TO ANY ANGLE. WITH LARGE OPENING ANGLE A LIGHT FRICTION CAN BE OBTAINED BY MEANS OF THE FRICTION SCREWS IN THE SIDES. THE FRICTION HAS TO BE THE SAME ON BOTH SIDES. PLEASE NOTE THAT THE SASH IS NOT SECURED FOR HEAVY WINDS AND OTHER HEAVY INFLUENCE.
6. FIT THE RESTRICTOR IPA NO. 62762 ON THE LEFT SIDE, SEE FIG. 1.

USE SCREW NO. 4.0.

**OPERATION INSTRUCTIONS:**

1. OPEN THE WINDOW - THE RESTRICTOR WILL AUTOMATICALLY RESTRICT THE WINDOW.
2. PULL THE SASH 20 MM - PRESS THE RESTRICTOR IN THE DIRECTION OF THE ARROW AND OPEN THE WINDOW.
3. WHEN THE WINDOW IS REVERSED FOR CLEANING, THE RESTRICTOR WILL ENGAGE AUTOMATICALLY. DISENGAGE AS MENTIONED IN POINT 2.

**MAINTENANCE:**

THE FITTINGS ARE NOT TO BE PAINTED. WHEN FITTING - LUBRICATE THE PIVOT/MOVABLE METAL PARTS OF THE MECHANISM WHILE ACTIVATING REPEATEDLY. HEREAFTER LUBRICATE MINIMUM TWICE A YEAR. DO NOT LUBRICATE THE ALUMINIUM RAILS. TEST THE OPERATION FROM TIME TO TIME.

IPA NO.	LENGTH OF FITTINGS MM	MAX. WEIGHT KG	INSIDE FRAME MM
62944	544	60	544-643
62945	644	45	644-743
62946	744	45	744-843
62947	844	45	844-943
62948	944	60	944-1043
62949	1044	60	1044-1143
62950	1144	60	1144-1243
62951	1244	60	1244-1343
62952	1344	45	1344-1443

USE THE LARGEST POSSIBLE FITTING

ATTENTION: MAX. WIDTH = HEIGHT + 300 MM, HOWEVER MAX. 1600 MM.